

## Menu

### Thyroid

T3  
T4  
TSH  
FT3  
FT4  
Anti-TG  
Anti-TPO  
TG  
PTH  
rT3\*

### Fertility

FSH  
LH  
Prolactin  
β-hCG  
AMH  
SHBG  
DHEA  
17 α-OHP  
Estradiol  
Testosterone  
Progesterone

### Anemia

Ferritin  
FA  
VB12

### Bone Metabolism

OST\*  
CT\*  
25-OH VD  
PTH

### Diabetes

Insulin  
C-Peptide

### Growth

IGF-1  
HGH

### Tumor marker

AFP  
CEA  
CA50  
CA125  
CA15-3  
CA19-9  
β2-MG  
CA72-4  
SCCA  
NSE  
CYFRA 21-1  
PSA  
fPSA  
HE4  
CA242\*  
PGI\*  
PGII\*  
ProGRP\*  
Ferritin

### Cardiac Markers

CK-MB  
cTnl  
MYO  
NT-proBNP  
BNP\*  
Trop T

### Hepato fibrosis

Col IV  
PIII NP  
HA  
LN  
CG

### Pre-Natal

f-β-HCG  
P-AFP  
u-E3  
PAPP-A  
Inhibin-A\*

### Infectious disease

HIV Ag/Ab Combo  
Anti-HCV  
Anti-TP  
HAV IgM  
HEV IgG  
HEV IgM

### Hepatitis B

HBsAg  
HBsAb  
HBeAg  
HBc-IgM  
Anti-HBs  
Anti-HBe  
Anti-HBc  
HBV PreS1-Ag  
Anti-HBc IgM

### TORCH

Toxo IgG  
Toxo IgM  
Rubella IgG  
Rubella IgM  
CMV IgG  
CMV IgG  
HSV-1 IgG  
HSV-1 IgM  
HSV-2 IgG  
HSV-2 IgM

### Tropical Diseases

Dengue IgG  
Dengue IgM  
Dengue NS1  
Chikungunya-IgM\*  
Malaria Ag\*  
Leptospira IgM\*  
Typhoid\*

### RTI & Other infection

*Mycoplasma pneumonia* IgG\*  
*Mycoplasma pneumonia* IgM\*  
*Chlamydia pneumonia* IgM\*  
Anti-Respiratory Syncytial Virus\*  
Adenovirus IgM\*  
Enterovirus71 IgM\*  
Coxsackie Virus IgM\*  
Influenza A Virus IgM\*  
Influenza B Virus IgM\*  
Anti-Parainfluenza IgM Virus\*

### SARS-CoV-Panel

SARS-CoV-2 IgG  
SARS-CoV-2 IgM  
Anti-SARS-CoV-2 RBD  
SARS-CoV-2 NAb(Quantitative)

### Inflammation

hS-CRP  
PCT  
IL-6

### Coagulation

D-Dimer

### Hypertension

Cortisol  
ACTH  
Cortisol  
Renin  
Angiotensin II

### Others

TB-IGRA  
IGE

## Autolumo A2000 Plus Specifications:-

Model Name	AutoLumo A2000 Plus-Fully automated CLIA(Chemiluminescence Immuno Assay)analyzer
Principle	Glow Chemiluminescence- CLIA
Type	Floor Module Analyser
Test Menu	More than 100 parameters
Mode of Operation	Random access and batch mode
Sample Loading	100 samples at a time and continuous loading
STAT Option	Yes
Throughput	200 Tests/hour
Sample Pipetting	Dedicated sample probe
Reagent Pipetting	Dedicated Separate reagent probes R1 & R2
No of Reagent Positions	24 Positions (it won't consume extra position for diluent)
Onboard Cooling System	Available 2 to 8° c.
Auto Dilution Facility	Available
Time to First Result	At 18 <sup>th</sup> min.
Sample Type	Serum or plasma
Assay Type	1 step assay (15 min incubation, 2 step assay (30 min incubation)
Barcode Scanning for Sample	Available
Barcode Scanning for Reagent	Available
Sample Loading Type	Primary tube and cups are acceptable
Intelligent Alarm Indication	Yes
Liquid Level Detection	Yes
Collision Protection	Yes
Clot Detection	Yes
Abnormal Result Flag	Yes
Suction Error Indication	Yes
No Carry Over	Probe are coated with teflon to avoid sticky material. Probes do internal and external washing.
Detection System	PMT
Measuring Units	RLU (Relative Light Units)
Measuring RLU Range	0 to 1600000000 RLU'S
Interfaces	Unidirectional & Bidirectional - LIS & HIS
Operation	BY dedicated PC (RS232 & RJ45 cable)
Results Storage	More than 5 lacs.
Reagent Storage	2 to 8° C.
Calibrators	Inbuilt with kit - (No additional cost)
Controls	Inbuilt with kit - (No additional cost)
Consumables	CLIA substrate, Universal diluent, Wash buffer, System wash, Reaction vessels.
Assay Calibration	6 Point calibration
Calibration Stability	28 days for all assays
Reaction Vessels Loading Capacity	1200 nos. (Individual reaction vessels)
Assay Incubation	At 37° C.
Sample Volume	10 to 50 µl (based on assay)
Onboard Reagent Mixer	Available
Consumables Indication on Screen	Available
LJ.QC Management	Available
Instrument Size	W*D*H (1470*835*690mm)
Special Parameters	Dengue, TB IGRA, HIV, HBsAg, HCV, HEV IgG, HEV IgM, AMH, 17OHP and complete TORCH panel includes HSV- 4 parameters.

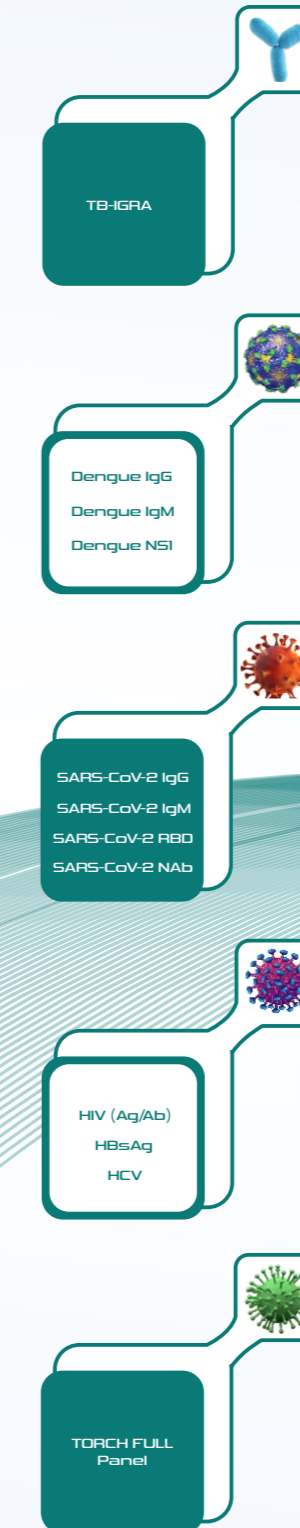
### Matrix Labs

Plot No.91 & 92, Sri Sai Building,  
Lakshminanthammal Street, Rajeev Nagar, Vanagaram,  
Chennai - 600077, India.  
+91-044-26793885 / 87 / Toll free : 18001201713,  
info@matrixlabs.in, www.matrixlabs.in



# Autolumo A2000 Plus

Fully Automated Chemiluminescence Immunoassay Analyzer



“Touching Human Lives Through Innovation”

(\*Under Development)



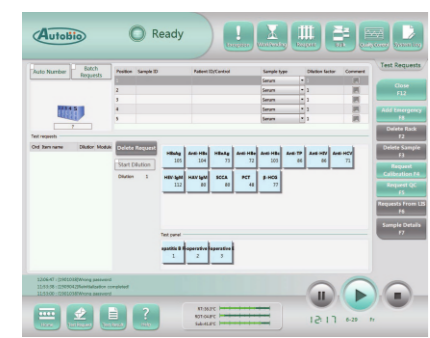


Powerful Software  
Optimizes Your Laboratory

## Instrument Software

- Multi-Language interface, easy to use
- Various data processing mode
- Intelligent display system
- Perfect operation menus
- Intact QC management

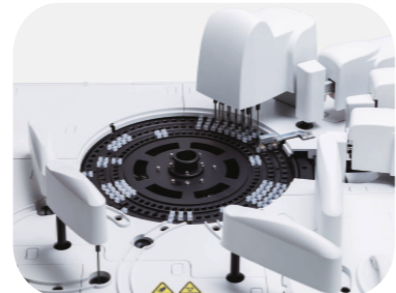
- Temperature and consumables monitoring service Edit, storage, search and print function
- Alarm of consumables insufficient



- Abnormal test result display
- Instrument trouble position system
- Connection to LIS via COM



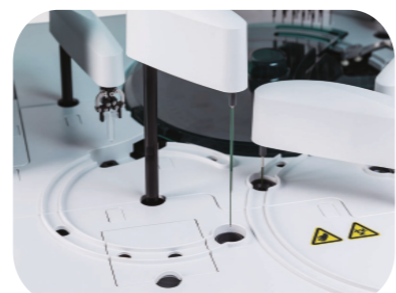
**RV Loading Module**  
Independent reaction vessel  
Up to 1000 pcs per batch with continues loading  
Automatically supply RV by "on -the -fly" chain  
Intelligently detect the amount of RV



**Incubation and Reaction Plate**  
192 reaction position in 3 rings  
Constant 37 C incubation



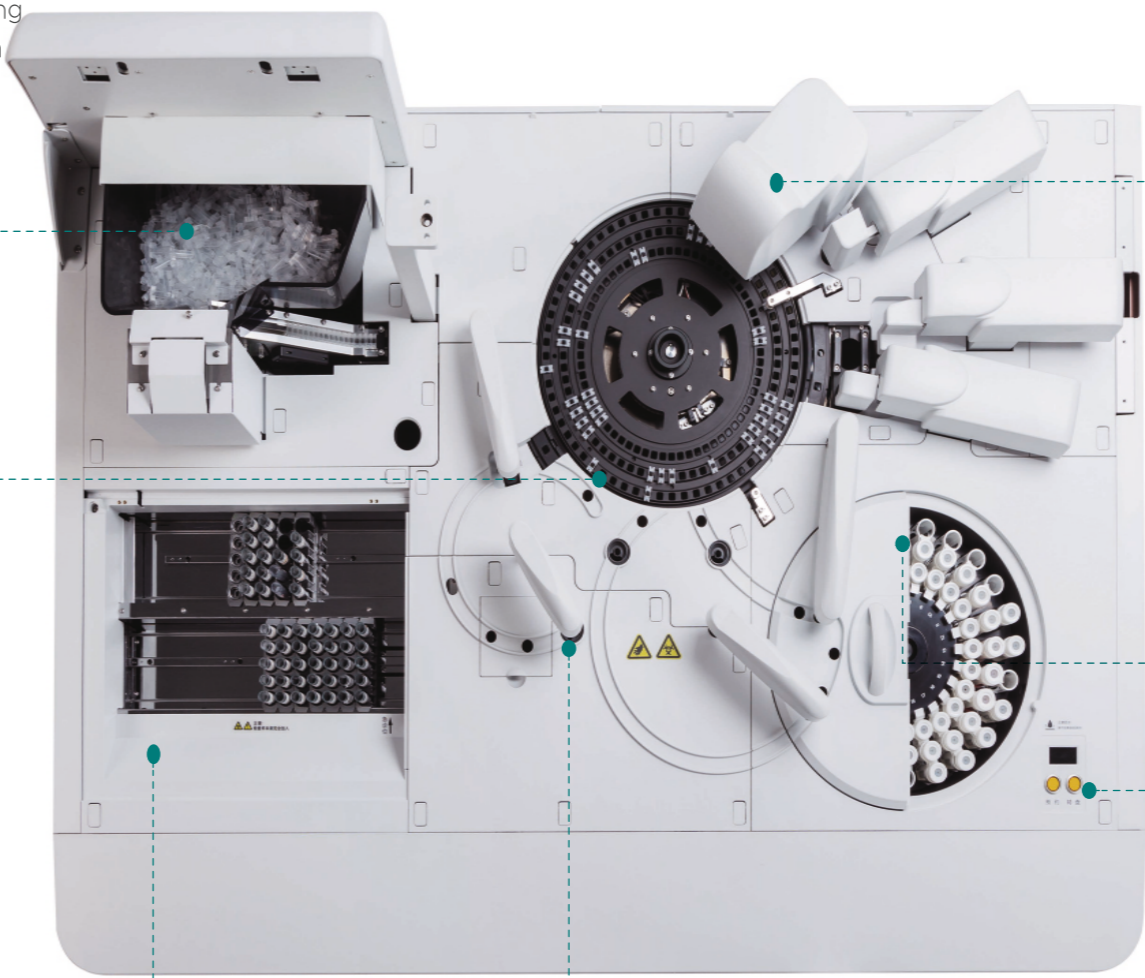
**Sample Loading Module**  
5 sample positions per pack  
Up to 100 samples loading capacity per batch  
Priority position for STAT samples  
Up to 200 tests processing capacity per hour



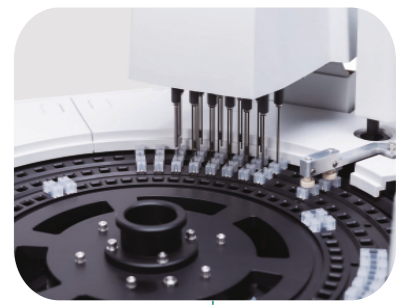
**Fixed Pipette Probe**  
Excellent rinsing system make carry-over <1ppm  
Liquid -level and blood coagulation detection system  
Sampling volume : 5ul-150ul  
On board sample dilution up to 100 times



Reagents Pack With Calibrators



**Washing Station**  
12 lines washing system  
6 times magnetic separation cleaning



**Reagent Module**  
Up to 24 reagent position on board with refrigeration at 4-10 C  
Continuous mixing the magnetic particle suspension  
Dual substrates switched automatically



**Online Reagent Changing**  
Onboard change for reagent by appointment without hatch-open



**Cabins for Consumables and Wastes**  
ordinary wash, system wash, distilled wash, liquid waste, dual substrates

